



# Lilybank News

Peace of Mind in a Caring Community

**THE LILYBANK HAMLET NEWSLETTER - MAY & JUN 2019**



**PROGRESSIVECARE**





“Hello everyone and welcome to the latest edition of the Lilybank News”

**I hope you all had a lovely Easter. The weather was certainly very kind to us and I hope it continues!**

I would like to inform you of new staff members who have recently joined the Lilybank team. We have Natalie Fahy and Anthony Witter who have joined as care assistants and Chelsea Kniveton who has joined as a domestic assistant. Our activities coordinator, Janet McIntosh has left Lilybank Hamlet and we wish her all the best for the future. We have a new activities coordinator, Katie Lloyd, who will be starting in a couple of weeks.

Our next Residents and Relatives Meeting will take place on Friday 10th May at 11.00 am and I hope that you will all be able to attend.

Finally, if you have anything you wish to discuss regarding the home or your relative, please do not hesitate to speak to either myself or the Deputy Managers, Katie Haymes or Kat Young. Alternatively, please feel free to complete one of the comments / suggestions cards which are located in the reception area (adding your name is optional). Please post in the comments box or hand directly to myself or Hannah Bates.

Kind regards

Rebecca Edwards  
Home Manager.



**Rebecca Edwards**  
HOME MANAGER

# Lilybank Care Home

Peace of Mind in a Caring Community



**At Lilybank Care Home we've created a luxurious environment in beautiful surroundings where you can live your life to the full.**

Our dedicated friendly staff ensure that all your care needs are met, whilst treating you with dignity and respect at all times and encouraging you to do the things you enjoy without the worries of everyday living.

**Our high quality services include:**

- Luxury Residential Care
- Residential Dementia Care
- Tailored Care Services
- Domiciliary Care
- Respite Care
- Holiday Stays



PROGRESSIVECARE

For further information about our services please call us on:

**01629 580 919**

info@progressivecare.co.uk | www.progressivecare.co.uk



# Let's Celebrate!

## BIRTHDAYS IN MAY

James Young  
5th May

George Warburton  
20th May

Chrissie Kurz  
21st May

## BIRTHDAYS IN JUNE

Iris Prince  
8th June

June Saunders  
15th June  
Lyn Osborne  
21st June

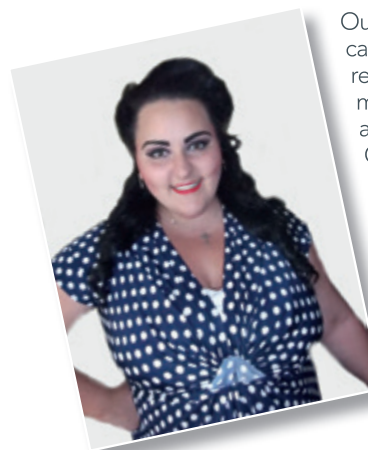
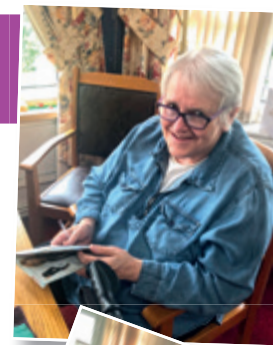
Keith Alesbrook  
28th June

Images from some  
of last months  
Birthday  
celebrations



## Activity news for May & June

Over Easter, our Residents enjoyed entertainment from Eleanor Matley (guest vocalist) and we also had our Grand Raffle. Thank you to everyone who kindly donated prizes and we are pleased to inform you that we raised £197.00 from ticket sales. The proceeds will go to our Residents Social and Entertainment Fund which will provide entertainment throughout the year.



Our Residents also enjoyed making rice crispy cakes for Easter and baking will now be a regular activity throughout the coming months. If anyone has suggestions for activities, we always welcome your ideas! Our aim is to ensure we offer a variety that everyone will enjoy.



On the 15th May, Ami Evans (vocalist) will be here at 2pm and on the 19th June, Martin Gregory (vocalist) will be performing at 2pm. Both Ami and Martin always put on a good show! Finally, on the 22nd May and 19th June, Reverend Richard Reade from All Saints Church, Tansley will be here at 11am for the church service.

## Things to Look Forward to

**Our Summer Fete will be taking place on Friday 23rd August at 2pm. This will include stalls, guest entertainers and of course, our Grand Raffle.**

We have received some very good prizes so far from Derby County Football Club, Gulliver's Kingdom and Chatsworth House, to name but a few! We aim to make this Summer Fete our best yet and any prize donations would be gratefully received!



# May Activities

MONDAY	TUESDAY	WEDNESDAY	THURSDAY	FRIDAY	SATURDAY	SUNDAY
		1 <sup>st</sup>  Arts & Crafts Music Therapy	2 <sup>nd</sup>  Walks Out Gardening 1-2-1 Time	3 <sup>rd</sup>  Prize Bingo Baking	4 <sup>th</sup>  Games & Wordsearch Film Day	5 <sup>th</sup>  Relaxation - Sensory Room Film Day
6 <sup>th</sup>  Chair Based Exercises Games & Crosswords	7 <sup>th</sup>  Hairdressing & Pamper Day 1-2-1 Time	8 <sup>th</sup>  Arts & Crafts Music Therapy	9 <sup>th</sup>  Walks Out Gardening 1-2-1 Time	10 <sup>th</sup>  Residents & Relatives Meeting - 11am Prize Bingo	11 <sup>th</sup>  Games & Wordsearch Film Day	12 <sup>th</sup>  Relaxation - Sensory Room Film Day
13 <sup>th</sup>  Chair Based Exercises Games & Crosswords	14 <sup>th</sup>  Hairdressing & Pamper Day 1-2-1 Time	15 <sup>th</sup>  Arts & Crafts Music Therapy Ami Evans - Vocalist 2pm	16 <sup>th</sup>  Walks Out Gardening 1-2-1 Time	17 <sup>th</sup>  Prize Bingo Baking	18 <sup>th</sup>  Games & Wordsearch Film Day	19 <sup>th</sup>  Relaxation - Sensory Room Film Day
20 <sup>th</sup>  Chair Based Exercises Games & Crosswords	21 <sup>st</sup>  Hairdressing & Pamper Day 1-2-1 Time	22 <sup>nd</sup>  Arts & Crafts Music Therapy Church Service - 11am	23 <sup>rd</sup>  Walks Out Gardening 1-2-1 Time	24 <sup>th</sup>  Prize Bingo Baking	25 <sup>th</sup>  Games & Wordsearch Film Day	26 <sup>th</sup>  Relaxation - Sensory Room Film Day
27 <sup>th</sup>  Chair Based Exercises Games & Crosswords	28 <sup>th</sup>  Hairdressing & Pamper Day 1-2-1 Time	29 <sup>th</sup>  Arts & Crafts Music Therapy	30 <sup>th</sup>  Walks Out Gardening 1-2-1 Time	31 <sup>st</sup>  Prize Bingo Baking		

# June Activities

MONDAY	TUESDAY	WEDNESDAY	THURSDAY	FRIDAY	SATURDAY	SUNDAY
					1 <sup>st</sup> Games & Wordsearch Film Day	2 <sup>nd</sup> Relaxation - Sensory Room Film Day
3 <sup>rd</sup> Chair Based Exercises Games & Crosswords	4 <sup>th</sup> Hairdressing & Pamper Day 1-2-1 Time	5 <sup>th</sup> Arts & Crafts Music Therapy	6 <sup>th</sup> Walks Out Gardening 1-2-1 Time	7 <sup>th</sup> Prize Bingo Baking	8 <sup>th</sup> Games & Wordsearch Film Day	9 <sup>th</sup> Relaxation - Sensory Room Film Day
10 <sup>th</sup> Chair Based Exercises Games & Crosswords	11 <sup>th</sup> Hairdressing & Pamper Day 1-2-1 Time	12 <sup>th</sup> Arts & Crafts Music Therapy Ami Evans - Vocalist 2pm	13 <sup>th</sup> Walks Out Gardening 1-2-1 Time	14 <sup>th</sup> Prize Bingo Baking	15 <sup>th</sup> Games & Wordsearch Film Day	16 <sup>th</sup> Relaxation - Sensory Room Film Day
17 <sup>th</sup> Chair Based Exercises Games & Crosswords	18 <sup>th</sup> Hairdressing & Pamper Day 1-2-1 Time	19 <sup>th</sup> Church Service - 11am Martin Gregory - Vocalist	20 <sup>th</sup> Walks Out Gardening 1-2-1 Time	21 <sup>st</sup> Prize Bingo Baking	22 <sup>nd</sup> Games & Wordsearch Film Day	23 <sup>rd</sup> Relaxation - Sensory Room Film Day
24 <sup>th</sup> Chair Based Exercises Games & Crosswords	25 <sup>th</sup> Hairdressing & Pamper Day 1-2-1 Time	26 <sup>th</sup> Arts & Crafts Music Therapy	27 <sup>th</sup> Walks Out Gardening 1-2-1 Time	28 <sup>th</sup> Prize Bingo Baking	29 <sup>th</sup> Games & Wordsearch Film Day	30 <sup>th</sup> Relaxation - Sensory Room Film Day

# Hairdressing

## @ the Hamlet

GENTS DRY TRIM  
**£6.50**

LADIES DRY TRIM  
**£8.50**

BLOW DRY  
**£11.50**

SHAMPOO & SET  
**£11.50**

SHAMPOO, TRIM & SET  
**£14.00**

COLOURING  
(ALL INCLUSIVE)  
**£26.50**

PERM  
(ALL INCLUSIVE)  
**£31.50**

EVERY TUESDAY  
with Mobile Hairdresser Diane Hall

If you wish to book an appointment, speak to one of the Team Leaders



## TEAM MEMBER of the MONTH



## Carol Thorpe

**Carol Thorpe works as a Domestic / Kitchen Assistant  
at Lilybank Hamlet.**

We would like to say a huge thank you for her continued  
commitment and hard work. She is a valued member  
of the Lilybank team.



# Lilybank Hamlet

Residential Care Home, Chesterfield Road, Matlock, DE4 3DQ

**Tel:** 01629 580919 **Online:** [www.progressivecare.co.uk](http://www.progressivecare.co.uk)

<https://www.cqc.org.uk/>

